

CERTIFICATE OF ANALYSIS

Product Name	N-lactoyl-phenylalanine (Lac-Phe) peptide, Cat.#: 318943 (TFA removed)
Lot No.	MTFA33334-250916
Sequence	{Lac}-Phe
Dissolution condition	15%ACN+85%H2O
Modification	TFA Removal
Molecular Weight (MW)	237.25
Storage	-20°C

Test Items	Specifications	Results
MW by MS	237.05	Conforms
Purity by HPLC	>95%	99.500%
Peptide Content	N/A	N/A
TFA solubility	N/A	N/A
Moisture content	N/A	N/A
Acetic acid content	N/A	N/A
Appearance	White to off-white lyophilized powder	Conforms
Quantity	5g	50.0mg*100

NovoPro Bioscience Inc. (hereafter NovoPro) warrants material of said quality at the time of sale. It is the sole responsibility of the customers to determine the adequacy of all materials for any intended or specific purpose or use. NovoPro's sole obligation is to replace the material up to the extent of the purchase price. This warranty applies only to products in original packaging and does not apply to a product which has been tampered with or altered in any way in or which has been misused or damaged by accident or negligence. All claims must be received writing (by fax or email) within 30 days from date when product arrive at the destination city and failure to do so shall constitute a waiver by customers for any and all such claims.

Certified by:



Sep/23/2025

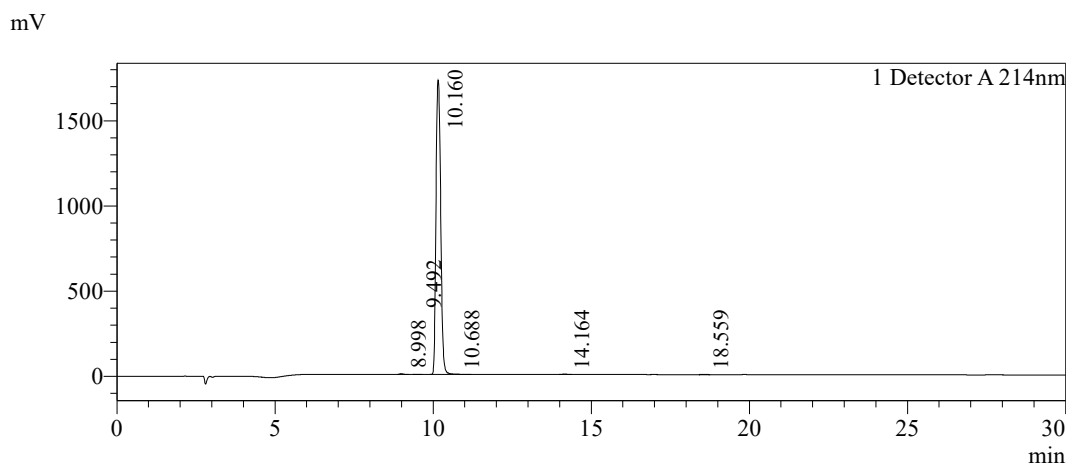
Quality Assurance Department



Sample Information

Order ID	:MTFA33334		
Name	: N-lactoyl-phenylalanine (Lac-Phe)		
Sequence	:{Lac}-Phe		
Lot. No	:MTFA33334-250916		
Pump A	:0.1%Trifluoroacetic in 100% water		
Pump B	:0.1%Trifluoroacetic in 100% acetonitrile		
Total Flow	:1ml/min		
Wavelength	:214nm		
Analytical column type	:Kromasil 100-5-C18 (4.6*250mm*5 µm)		
Dissolution method	:15%ACN+85%H2O		
Inj. Volume	: 10ul		
Time	Module	Action	Value
0.01	Pumps	B.Conc	20
30.00	Pumps	B.Conc	50
33.00	Pumps	B.Conc	100
38.00	Pumps	B.Conc	100
40.00	Pumps	B.Conc	20
50.00	Controller	Stop	

Chromatogram

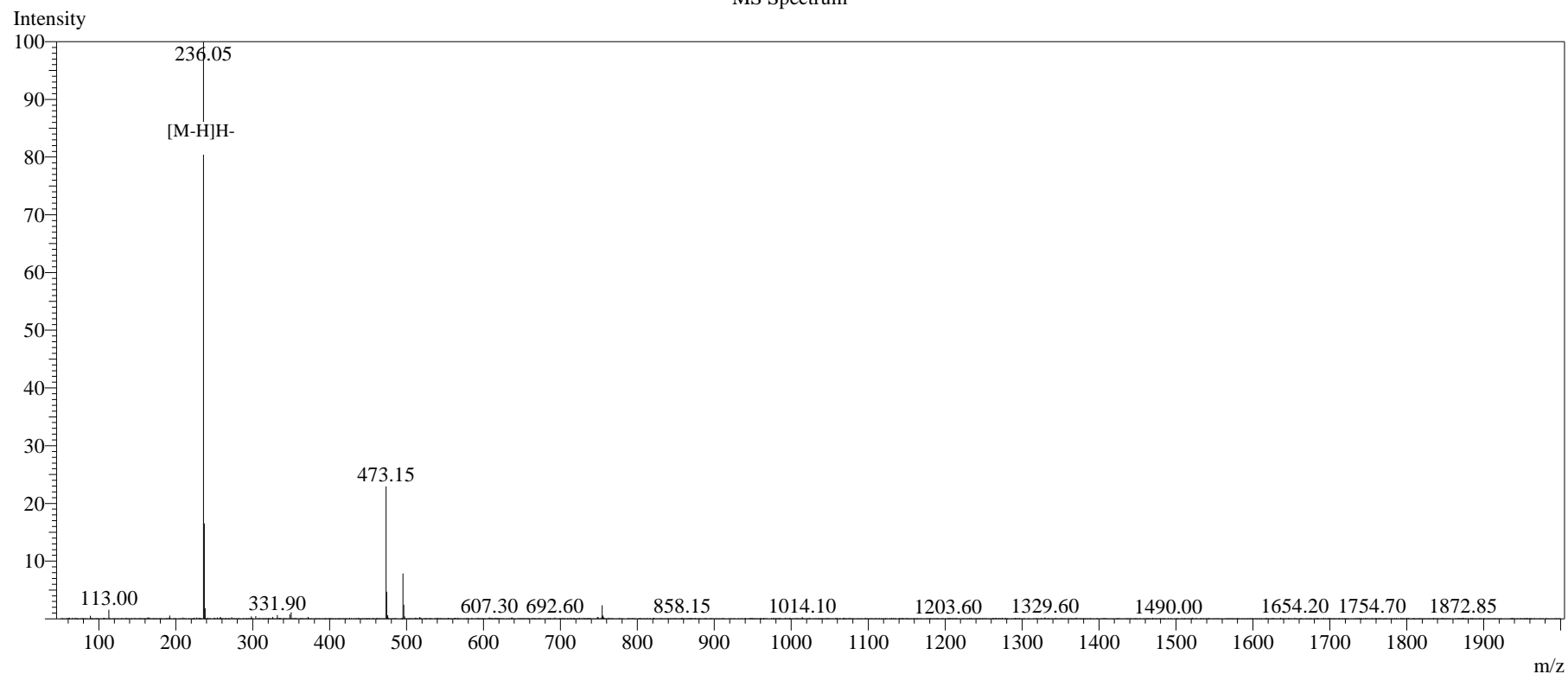


Peak Table

Detector A 214nm

Peak#	Ret. Time	Area	Height	Area%
1	8.998	28608	3624	0.159
2	9.492	6307	808	0.035
3	10.160	17909642	1726192	99.500
4	10.688	20330	1981	0.113
5	14.164	24582	2703	0.137
6	18.559	10200	1118	0.057
Total		17999669	1736426	100.000

MS Spectrum



Sample Information

Dissolution method	:15% ACN+85% H ₂ O	Interface	:ESI	Prerod Bias	:+4.5kv
Date Acquired	:2025/09/19 11:05:40	Nebulizing Gas Flow	:1.50L/min	Detector	:-0.2kv
Injection Volume	:0.2ul	CDL Temp	:250°C	T.Flow	:0.2ml/min
Block Temp	:200	CDL Volt	:0v	B.conc	:50% H ₂ O/50% ME OH
Order ID	:MTFA33334				
Name	:Lac-Phe				
Sequence	:{Lac}-Phe				
Lot.No	:MTFA33334-250916				
Theoretical	:237.25				
Observed	:237.05				